



## WESTMORELAND CONSERVANCY NEWSLETTER

[www.westmorelandconservancy.org](http://www.westmorelandconservancy.org)

April 2008 Editor: Shelly Tichy (724) 325-5523 [shellytichy@comcast.net](mailto:shellytichy@comcast.net)

[Jump to Eco-Fun page...](#)

### Conservation Connection at the Zoo

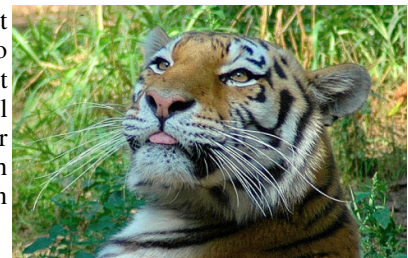
*Conservation Connection at the Zoo*, hosted by the Westmoreland Conservancy on **Saturday, May 3, 2008** is providing a long-overdue opportunity for conservation-minded people and organizations throughout the greater Pittsburgh region to **Gather, Share and Celebrate Conservation**. What better venue to get together and compare ideas than the **Pittsburgh Zoo & PPG Aquarium**, where "Conservation" is a way of life?

Of course, *Conservation Connection at the Zoo* is also a chance for Westmoreland Conservancy members and their families to join friends for fun, good food, and good conversation. **Tickets are available through our website at [www.westmorelandconservancy.org](http://www.westmorelandconservancy.org). Prices for the dinner event are: \$15 for Adults (ages 13 and up), \$8 for Children (ages 3 – 12). Children under age 3 are free!**



*Conservation Connection at the Zoo* times are from 5:00 to 9:30 pm, although it will be possible to come early and tour the zoo using **\$6 admission tickets**, available only through our website or by calling 412-951-0601.

Beginning at 5 pm guests with the *Conservation Connections at the Zoo* Event tickets are invited to enjoy Behind-the-Scenes tours (please arrive before 6pm to participate) and see Zoo Animal Appearances. The Classic American Picnic Buffet will be served in the Garden Tent at 6:30 pm. And participating organizations will have information from their related groups on display around the perimeter. Our Speakers will be introduced at 7:30 pm. We have a Silent Auction arranged with wonderful items for our guests to bid on until 8:30 pm and an evening filled with fun activities for the children.



We would like to express our gratitude for the generosity of our sponsors. Because of them we have been able to keep the attendance prices low. They will be recognized in our event program. The *Conservation Connection at the Zoo* planning committee includes Shelly Tichy, Katie Blackmore, Joanne Kendall, Cary Bohl, Doug Bauman, Richard Wagner, Geri Mitchell, Dick Byers, Mark Emerson, and Betsy Aiken.

[Conservation Connection at the Zoo logo](#) 100% cotton pre-shrunk T-Shirts are available for order on the [Conservancy website](#) as well!

**GATHER, SHARE, AND CELEBRATE CONSERVATION  
CONSERVATION CONNECTION AT THE ZOO  
SATURDAY, MAY 3, 2008**

- Classic American Picnic Buffet
- Cash Bar (must be 21 years or older)
  - Guest Speakers
- Zoo Animal Appearances
- Behind-the-Scenes Zoo Tours
  - Silent Auction
- Children's Activities
  - Face Painting
- Windows to Conservation Activity Room
- Free Parking

*Join us from 5:00 p.m. to 9:30 p.m. at the Pittsburgh Zoo & PPG Aquarium*

**Tickets On Sale Now through April 26:**  
Available at [www.westmorelandconservancy.org](http://www.westmorelandconservancy.org)  
(Please note that admission will be by advance ticket sales only)  
Cost: \$15 for adults, \$8 for children ages 3-12, (children under age 3 FREE)  
For additional information: e-mail: [contact@westmorelandconservancy.org](mailto:contact@westmorelandconservancy.org) or call 412-951-0601

PITTSBURGH ZOO  
Hosted by  
WESTMORELAND CONSERVANCY

## April 2008 Elections Meeting

Our regularly scheduled April 2008 meeting will include the election of one-third of our board of governors. This election is by the general membership, so please attend if you can. After the general membership elects the new governors, the governors will then elect the 2008 officers.

Remember - Annual Elections Meeting on April 23, 2008 at 7:30 pm, in the conference room next to the Library.

---

*“We abuse land because we regard it as a commodity belonging to us. When we see land as a community to which we belong, we may begin to use it with love and respect.”*

~Aldo Leopold, A Sand County Almanac

---

## President's Report April 2007 - April 2008

At the end of our annual meeting a year ago there were two major goals that I wanted to further: (1) pursue additional land acquisition, and (2) increase the membership of the Conservancy. Quite honestly I can't say that either of these was fulfilled. However, thanks in no small part to the hard work of the Board of Governors and several members-at-large, I think that I can safely say that in the upcoming year one and maybe both of these goals will be realized. Let me tell you a little about the groundwork that has been laid.

A new, county-wide conservation-minded organization was established in the Fall/Winter of 2007/2008. The Westmoreland Land Trust (WLT) was formed and members assigned by the County Commissioners. Several members of the Westmoreland Conservancy served on the WLT Steering Committee to establish some preliminary ground rules and guidelines. The formal assignment of a sitting Board was finalized in early 2008, with Betsy Aiken of the Conservancy seated on that Board. It remains to be seen exactly how the WLT will go about developing and meeting its detailed goals, but it appears that conservation of land is a priority. What does this mean to the Conservancy? We, along with other like-

minded organizations, may serve to facilitate that goal.

In addition to this partnership the Conservancy is hopefully finalizing the details of an additional behest which may not only increase the Conservancy's land holdings but will also enhance a community-wide goal of creating a 'cross-Murrysville' green corridor.

Two events that will take place later this calendar year are intended to bring members of the Conservancy closer to other conservation-oriented organizations, not only on a regional basis but nationally as well. In addition, these events will serve to advertise not only the Westmoreland Conservancy, but also the municipality of Murrysville.

On May 3rd the Conservancy is acting as the primary host for the 'Conservation Connection at the Zoo', sometimes shortened to 'CCZ'. This will consist of an evening at the Zoo, including dinner and a special tour. This is intended to bring the Conservancy into close contact with other regional organizations. Check the Conservancy website and Newsletter for more details.

In mid-September the city of Pittsburgh is hosting 'Rally 2008', the national get-together for the Land Trust Alliance. The Westmoreland Conservancy developed and submitted to the Alliance a proposed tour of regional conservation-related sites that will be visited by people from across the country. The Conservancy's offer was accepted by the Alliance committee, so we'll be hosting one of several such tours.

You'll be able to read about how these events turned out in the July and October Newsletters.

In addition to an exciting future the Conservancy was involved in a lot of activities during the past year. Much of it had to do with furthering a positive relationship with both the municipality and other local organizations.

During the late spring the Murrysville-Export Rotary Club performed valuable volunteer work on the Conservancy's King Reserve. Many thanks to the Rotarians for continuing what has become an annual event. We hope they continue assisting us in the maintenance of this reserve.

During the summer the Conservancy participated in Murrysville's Community Day. We hosted Beth Shoaf and a trio of reptiles that her organization, Wildlife Works, has helped preserve. She was very popular with Community Day attendees. Hopefully we will be able to work with Beth's group again.

Another continuing joint effort with the municipality was the park chat walks that take place periodically in both municipal parks and Conservancy reserves. Michelle Clarke, Parks and Recreation Director for the municipality for several years, has recently announced her resignation. She was instrumental in making these walks a continuing success. We shall miss her help in arranging these informative outings that help introduce residents to Conservancy lands, and hope that her replacement can continue this good work.

Something else happened this year that, to the best of our knowledge, had not happened before. During the planning and approval phases of the Shagbark development on Weistertown Road a right-of-way allotment along one boundary of the development's land was identified for conveyance to the conservancy. This slice of land borders the King Reserve and will assist in completing the green corridor mentioned earlier.

So...lots accomplished this year, and hopefully lots more to conclude in the next. Those of us close to these future efforts are very excited about the possibilities close at hand, and we hope that other members are as well. Your Conservancy may benefit greatly from the generosity of others as well as the hard work of the Conservancy Board and membership.

If you would like to join in bringing some of these to fruition, and experience the satisfaction that will surely follow, please contact the Conservancy. It can use all of the help it can get.

In closing I offer the words of a former president:

"Our Conservancy has always functioned through the talents, hard work and generosity of people who care deeply about conservation. Thank you for supporting the Westmoreland Conservancy as we work to preserve natural areas for the benefit of biodiversity, wildlife habitat and contribution to the quality of life of the people of our area, now and for years to come."

Mark Emerson, President

***"Sustainable development is...development that meets the needs of the present without compromising the ability of further generations to meet their own needs."***

- World Commission on Environment and Development, *Our Common Future*, 1987

---

## January, February & March

## Excursions

**Carnegie Museum, January 26<sup>th</sup>:** Our group met in the Dinosaur Hall and promptly dispersed to the various areas of interest. Dinosaurs, Minerals, Architecture.....So much to see!

**Phipps, February 10<sup>th</sup>:** Our visit fell within the last days of the Dale Chihuly art glass exhibit. What a spectacular melding of glass and plants! In many areas the plants had grown intertwined with the glass so that it was difficult to tell where one ended and the other began.

**Ohiopyle, February 16<sup>th</sup>:** Icicles, waterfalls and snow. All on a beautifully warm day in February! After walking up and down along the rapids and watching the trains go by, we made our way over to The Slides, then out for a late lunch before heading home.

**McGinnis Reserve, March 8<sup>th</sup>:** Unseasonably warm, with no snow in sight, we hiked along rather wet trails, startled deer, inspected enclosures and generally enjoyed a lovely walk.

### Submit Your E-Mail Address To Have Event Updates & Information Delivered

If you are interested in being more closely informed about events, walks and excursions please provide your E-mail address on the attached form and mail it to the address provided. You can also E-mail it to the Conservancy website, also provided in this Newsletter.

## Westmoreland Conservancy

An all volunteer, non-profit, 501c-3 Corporation dedicated to acquiring and preserving rural and rustic lands for the public good.

---

### 2007 Board of Governors/Officers

**Officers: President – Mark Emerson**

**Vice President – Betsy Aiken**

**Secretary – Joanne Kendall**

**Treasurer - Bjoerg Granger**

**Governors: Dick Byers, Doug Bauman, Cary Bohl, Katie Blackmore, Lisa Hyland, Charles Conway, Maury Hanes**

The meetings are open, and we look forward to seeing you there. Meetings are held the 4<sup>th</sup> Wednesday of each month at the Murrysville Library at 7:30 pm.

**April 23<sup>rd</sup>**

**May 28<sup>th</sup>**

June 25<sup>th</sup>

The next Newsletter is scheduled for **July 2008**

**Westmoreland Conservancy**

**P.O. Box 446**

**Murrysville, PA 15668**

[contact@westmorelandconservancy.org](mailto:contact@westmorelandconservancy.org)

**Schedule of Upcoming Events**

Please respond if attending an outing to: [contact@westmorelandconservancy.org](mailto:contact@westmorelandconservancy.org)

**Wednesday, April 23:** Annual Meeting and Elections, 7:30 PM at the Murrysville Library Municipal Room.

**Saturday, May 3<sup>rd</sup>:** *Conservation Connection at the Zoo.* 5 – 9:30 pm at the **Pittsburgh Zoo & PPG Aquarium.** See page 1.

**Wednesday, May 28<sup>th</sup>:** Monthly meeting

**Saturday, May 31<sup>st</sup>:** Rockland Furnace/McConnell’s Mills. Meet at Panera/Murrysville at 9:30 AM.

**Saturday, June 14<sup>th</sup>:** Bear Rocks. Meet at Panera/Murrysville at 9:30 AM

**Wednesday, June 25<sup>th</sup>:** Monthly Meeting,

**Westmoreland Conservancy**

**Membership Application**

P.O. Box 446

Murrysville, PA 15668

**Membership Levels**

Individual.....\$15.00

Family.....20.00

Business membership.....40.00

Additional Donation.....\$ \_\_\_\_\_

Name \_\_\_\_\_

Address \_\_\_\_\_

City \_\_\_\_\_

State \_\_\_\_\_ Zip Code \_\_\_\_\_

e-mail \_\_\_\_\_

For your convenience, you may also renew your membership or give donations through our website at [www.westmorelandconservancy.org](http://www.westmorelandconservancy.org)

# ECO-FUN PAGE



No matter the season, this easy-to-make feeder will be appreciated by your neighborhood birds. It features seed treats to provide them extra energy!



To make a batch, bring 6 tablespoons of water to a boil. Empty one 1/4-ounce package of unflavored gelatin (we used Knox brand) into 2 tablespoons of cold water in a large bowl. Let the gelatin sit for 1 minute, then add the boiling water and stir for 2 to 3 minutes or until the gelatin has dissolved.

Next, stir 2 cups of your favorite wild birdseed into the gelatin, mixing thoroughly. (I like peanuts and sunflower seeds for the woodpeckers!) Let the mixture set for a few minutes, then stir again. Repeat this process a few times, if necessary, allowing the seed to absorb the liquid. Spoon the seed mixture into three 4-inch mini bundt or fluted pans. Place the pans in the refrigerator or a cool room and let them set for at least 3 hours. Remove the wreaths from the molds by turning over the pans and tapping along the bottoms. Let the wreaths to air-dry overnight.



Finally, tie raffia ribbon around your wreaths and hang them outside in a protected spot, such as under an awning or eaves, where the rain won't melt them.

## Shopping list

- 1/4-ounce package of unflavored gelatin
- 2 cups of your favorite wild birdseed
- Three 4-inch mini bundt or fluted pans
- Colorful raffia

# Summer & Autumn Wildflowers Of Western PA



M Y T T F A E L T E V L E V D J L M  
D E E W E K O P X T H N K T R I U K  
R T N B J E W E L W E E D K O L W J  
Z M J R U P R X R K G L K F L F H W  
E G P Y P T M J T J F T E I G F T Y  
C C E Z B M T Q O L T R E Y Y R O Q  
A H P N W L H E E E T N X K O Y A X  
L I I B I R L A R T P D Z W R D D H  
S C P N L A B A O F K Y S Z E B F Z  
E O N G K A T O L T L N E E G B L M  
N R A J N T F N M A H Y W W T X A I  
N Y I E W S I T A O E N W K E Q X L  
A Q D P D H L M J L O H R E B E M K  
N M N R N F Z T O R P Z E H E X D W  
E G I W Z X S K I T M H T W Y D R E  
E B Q B L A C K C O H O S H R P N E  
U D O R N E D L O G V Y A J D R B D  
Q T Y Y F G F V C J T E A S E L L T

Copyright © 2007 StellaTilly. www.WordSearchMaker.com